



NOW OWN YOUR DREAM HOME ON A GOLF COURSE !

THE FIRST GOLF LIVING PROJECT

OF CENTRAL / SOUTH GUJARAT



Welcome to the wonderful eden called Kensafari Golf Living. The first Golf Living Project of Central / South Gujarat.

Spread over 100 acres, with a world class 9 Hole Par 36 Golf Course and nestled amongst lush greenery, Kensafari presents a world of the beautiful and the bountiful. The stunning beauty of the project will take your breath away.

Kensafari promises to be an ideal 1st home as it is just 6.5 kms away from the chaos of everyday traffic. Sumandeep Medical College & Hospital is just across the road and Parul Institute is 5 kms away. A proposed Railway University is also planned at nearby Pipariya village.

At Kensafari, you will be transported into a world of serenity amidst verdant greenery and the chirping of birds. Luxuriate in the beauty of a green and landscaped golf course. Experience the exciting facilities of a happening 2 Lakh Sq Ft sports complex. It houses an expansive clubhouse and various facilities like Swimming Pool, Tennis, Squash, Badminton, Spa, Restaurant and Banquet Hall. Now you can make your life a happening one !

Kensafari Golf course is designed by UK architect Bob Hunt of IDG Group who have also designed courses like Aamby Valley Golf Course, Prestige Golfshire - Bangalore, JayPee Cities Golf Course and various international golf courses. Our golf course will have some unique facilities like Night Driving Range, Virtual Golf, Golf Academy and Multi level driving range.

The campus has more than 50,000 trees, DPS school, shopping complex, entertainment zone and temple to make your eden a complete self sufficient package.

Choose from over 250+ Infrastructure ready plots or golf facing apartments and tee off into high living.

Welcome to your Peace of Paradise !

PROJECT HIGHLIGHTS



FACILITIES



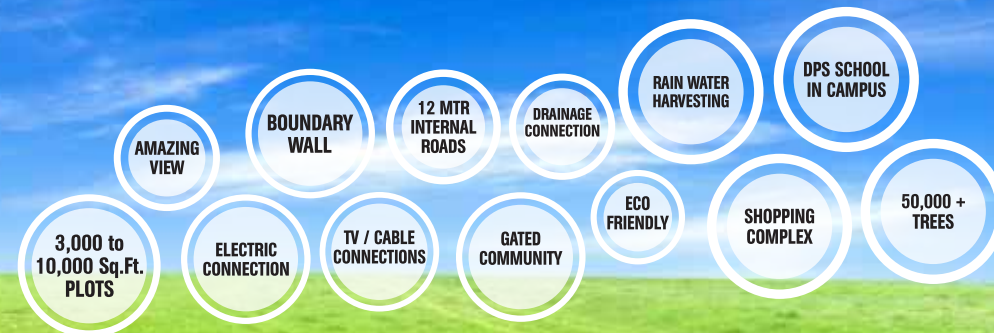
ACTIVITIES



GOLF COURSE



PLOTS



Your "Dream Home" is about to become a REALITY !

KENSAFARI
SPORTS CLUB



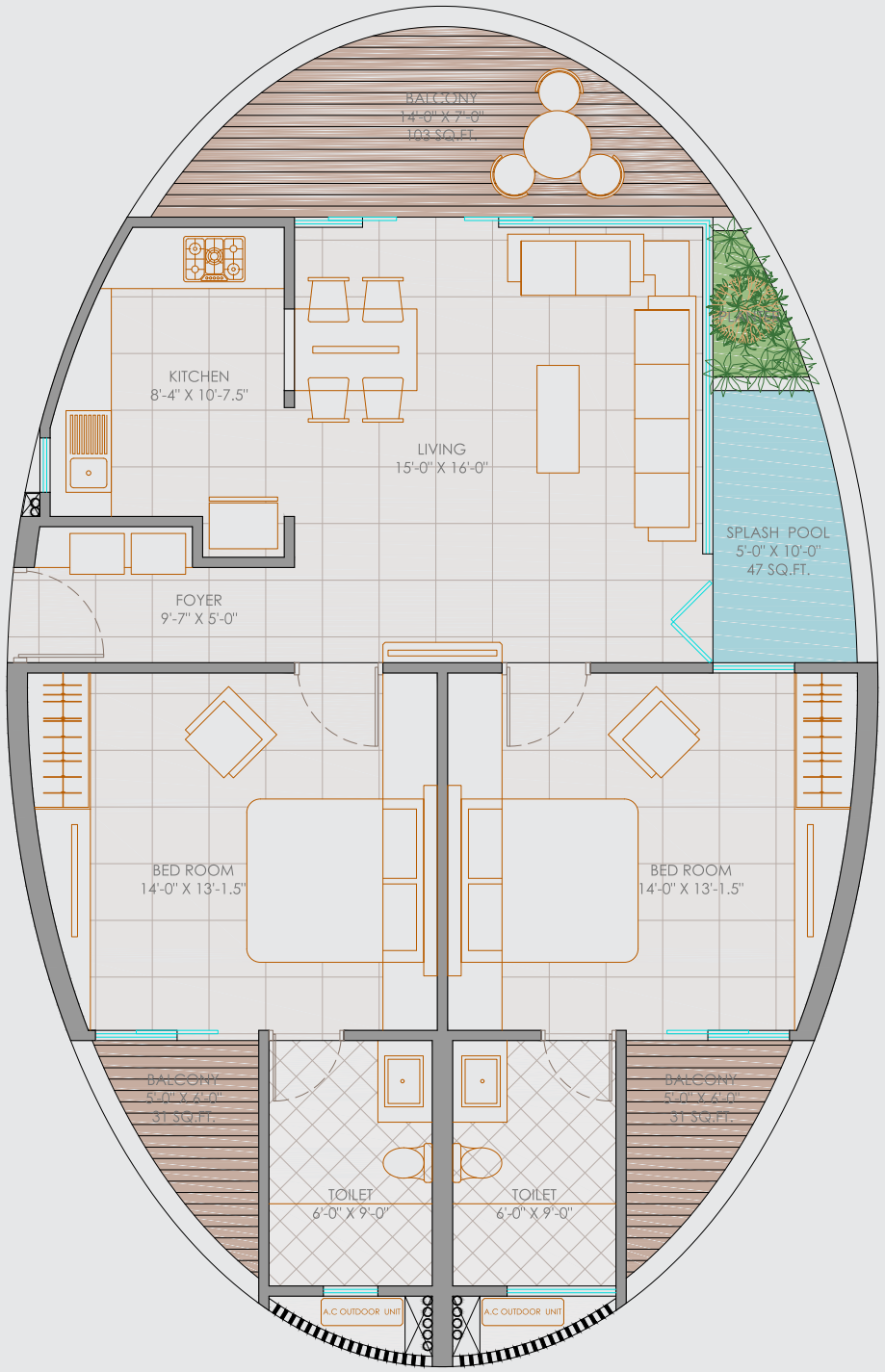




GOLF VIEW
APARTMENTS

GOLF VIEW
APARTMENTS
LAYOUT

1650 sq. ft.



GOLF VILLA

OPTION 1

Plot Area approx 4000 sq.ft.



Architect : UNEVEN





GOLF VILLA PLAN OPTION 2

Plot Area approx 3000 sq.ft.

FLOORING

- 32" X 32" Branded Vitrified in Livingroom, Family Sitting, Passage, Kitchen and Dining area.
- 24" X 24" High Quality Vitrified Tiles in all Bed Rooms
- Kota Stone in Staircase.

DOORS

- Main Door: High Quality Wooden Frame Door with Double Side Laminated Sheet.
- Other Doors: High Quality Wooden Frame Door with Double Side Laminated Sheet.

WINDOWS

- Anodized Aluminum section fully Glazed Windows.

KITCHEN

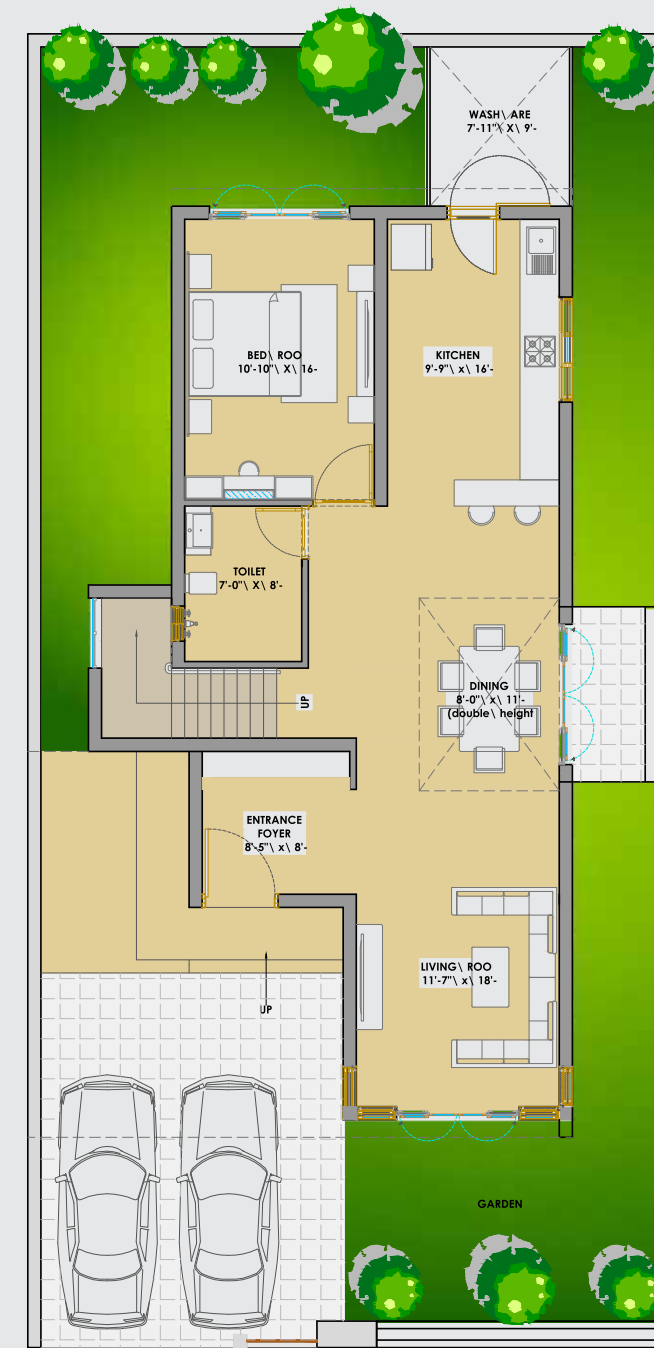
- Granite Platform with Stainless Steel Sink
- Ceramic Tiles Dado over platform.
- Wash area with Ceramic Tiles Dado and Natural Stone Flooring.

TOILETS

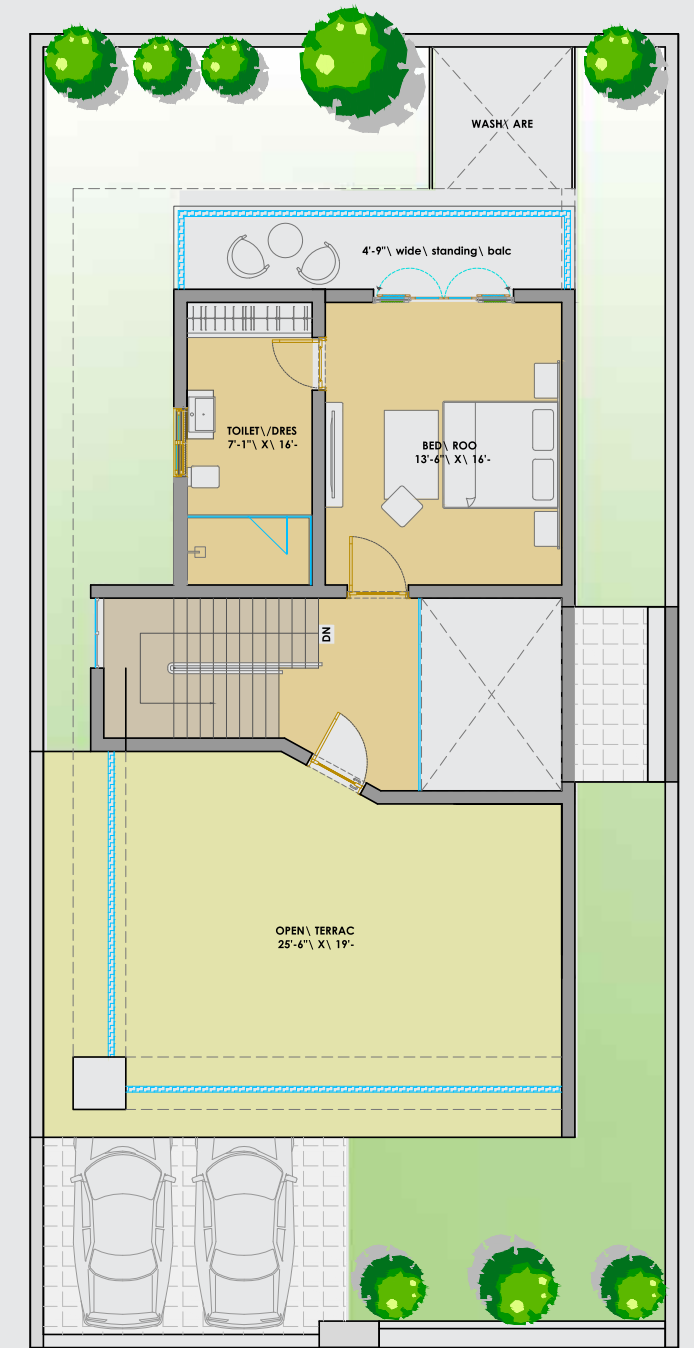
- Designer Wall Tiles up to Lintel Level.
- Anti-Skid Ceramic Tile Flooring.
- Granite/Stone Counter with Ceramic Wash Basin.
- C.P. Fittings of Jaquar / Vessels of Cera or equivalent make

ELECTRICAL

- Good quality Modular Switches.
- Provision for TV, Telephone and Internet points at convenient locations.



Ground Floor Plan
(Built Up Area-1501 SQ.FT.)



First Floor Plan
(Built Up Area-799 SQ.FT.)

Architect : Parth Ganatra & Associates

GOLF ACADEMY



Kensafari Golf Academy will be a boon for all golfers - be it a child, beginner or the seasoned golfer. There is something for everybody. Our multi-level driving stations can be operational even during night. Two full time qualified golf coaches will be honing the skills of the golfers by personal attention and innovative teaching techniques.

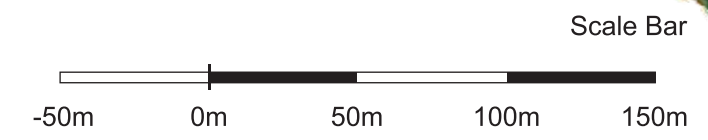
Our Academy would be equipped with :

- Floodlit Range
- Multi-level Driving stations
- Bunkers and Practice Greens
- Pro-Shop
- Golf Simulator
- Professional coaches
- Restaurant
- Golf Workshops



GOLF COURSE

9 Hole PAR 36



- TERMS & CONDITIONS :**
- The following will be charged extra in advance/as per government norms : (a) Stamp Duty & Registration Charges, (b) Service Tax (as actual), VAT or any such additional government taxes if applicable in future, (c) Maintenance Deposit.
 - If any new tax applicable by central or state government in future, it will be borne by the buyers/members.
 - Possession will be given only after one month of settlement of all accounts.
 - Continuous default in payments leads to cancellation. The developers reserve all the rights to change the plan, elevation, specification or any details will be binding to all.
 - Changes in any structural design and changes in any external facade will NOT be permitted under any circumstances.
 - Internal changes will only be permitted with prior permission.
 - Outdoor AC units will be fitted as per provision provided in the designated place by the architect.
 - Any balance FSI at present or in future shall be availed by the developer and no member would claim any rights for the same.
 - This brochure is for information purpose only. It does not form a part of the agreement or any legal document. The developer retains the right to alter the specifications without any consent of the member.

LOCATION MAP



Location

Opp. Sumandeep Vidyapeeth
Waghodia Road,
Vadodara, Gujarat INDIA

For More Info

Ph.:+91 99244 93600
yogesh@rhythmindia.net
web : www.kensafarigolf.com

Developers

KENSAFARI
Golf and Resorts LLP

Golf Architect

BOB HUNT
(IDG Group UK)

Club House Architect

UNEVEN ARCHITECT
(Shaurya Patel)